

# John Stokes Square Redevelopment

## Project update

As part of continuing works in the redevelopment of John Stokes Square, the Department of Infrastructure, Planning and Logistics advises that various planned road closures and night works will be taking place.

### Road closure

Progress Drive will be closed from **28 June to 9 July**. A detour is in place around Pavonia Place. The carpark along the shop fronts on Progress Drive will remain open.

### Night works

Night works will be taking place on **15 and 16 June** and between **12 and 29 July 2021**. Night works will be **from 10pm to 6am** intermittently during this period.

The works are to undertake pavement construction, asphaltting and connecting water mains.

Residents in the area may experience temporary road closures, detours, some construction noise and light emissions during this period.

The night works will be taking place to minimise disruption to traffic and the community, Darwin bus services and businesses in the area. White noise beacons for reversing alarms on mobile plant equipment will be adopted and noise levels will be monitored. Dust will be kept to a minimum through a thorough watering program.

We ask everyone to adhere to the traffic management in place.

The maps over the page illustrate the planned traffic conditions and worksites that may be in place during different stages of construction. The proposed maps are indicative only and traffic conditions are subject to change during construction.

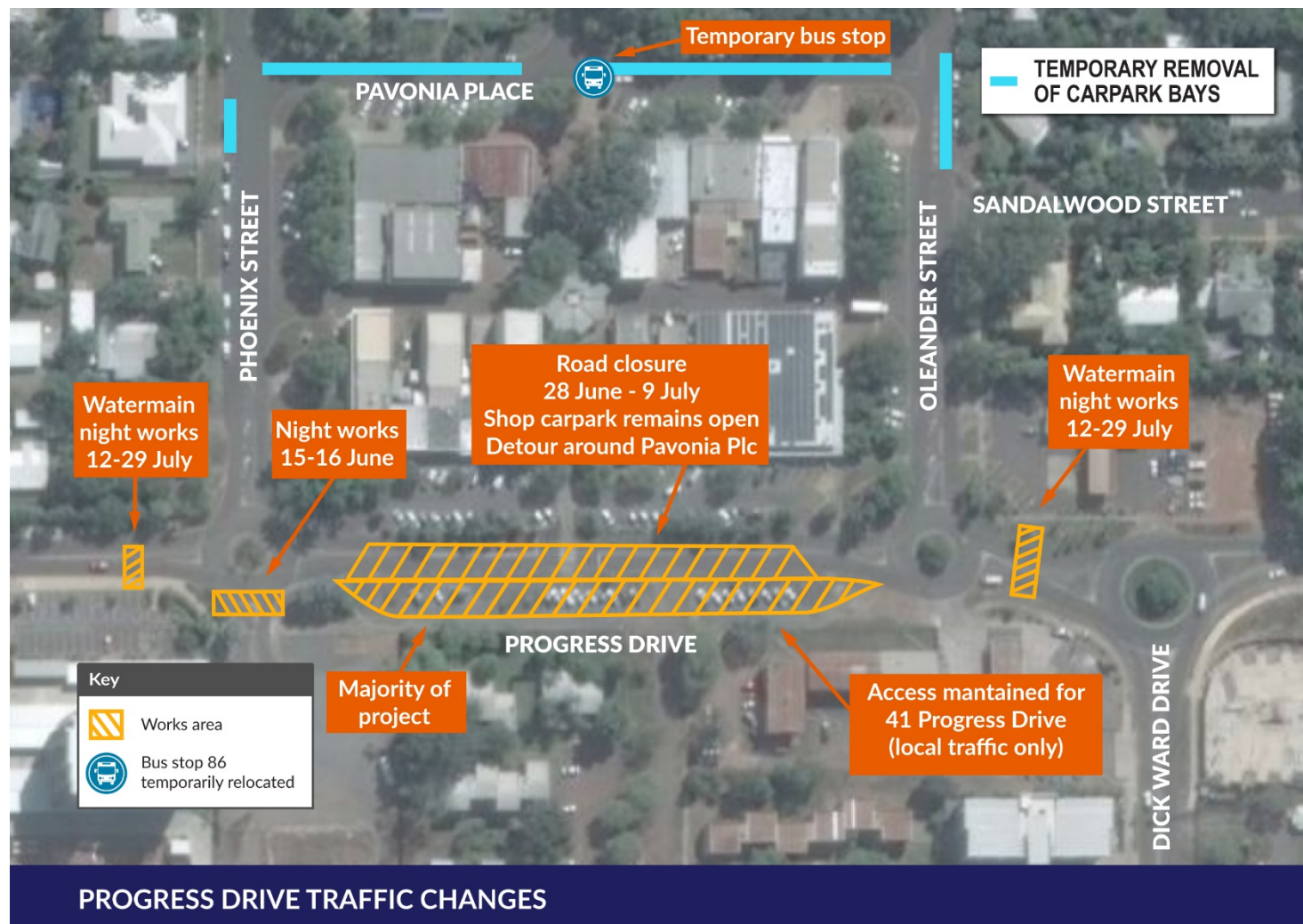
We thank you for your patience while we deliver this important community project.

### Contact

For further information about the project or to provide feedback on the planned traffic changes, please email [feedback@truenorthcomm.com.au](mailto:feedback@truenorthcomm.com.au), call the project hotline **1800 517 341**, or visit [dipl.nt.gov.au](http://dipl.nt.gov.au).

*Please turn over to view the proposed map of planned traffic changes...*

## Planned changed traffic conditions during construction



Various detours will be in place for the road closures and night works.

*\*\* Please note that planned works may be subject to change during construction.*