

PORT of DARWIN - Australia's northern gateway of choice.

DARWIN PORT CORPORATION

TERRY O'CONNOR  
Chief Executive Officer

# Darwin Port Corporation



## DPC - Principal Trades

- Petroleum and other bulk liquids
- Dry bulk imports and export
- Offshore oil and gas rig services
- Livestock Exports
- Container and general cargo
- Cruise and naval vessels







DARWIN PORT CORPORATION



**If you build it, they will come**



DARWIN PORT CORPORATION







DARWIN PORT CORPORATION

# City Wharves



# What Next?



## ALLURE OF THE SEAS:

Passengers: 5200  
Crew: 2500

Length: 360M  
Height: 75M

Equates to 22 Jumbo Jets arriving at Darwin Airport at the same time.



# East Arm Wharf

*East Arm has 775m of continuous quay line which is available to Port users on a common user basis.*

**Rig Tender Berth 140m  
Depth: 12.2m**

**Bulk Loader  
Berth 280m  
Depth: 12.5m**

**General/Container Berth  
145m  
Depth: 11.8m**

**Liquid Berth 210m  
Depth: 11.8m**



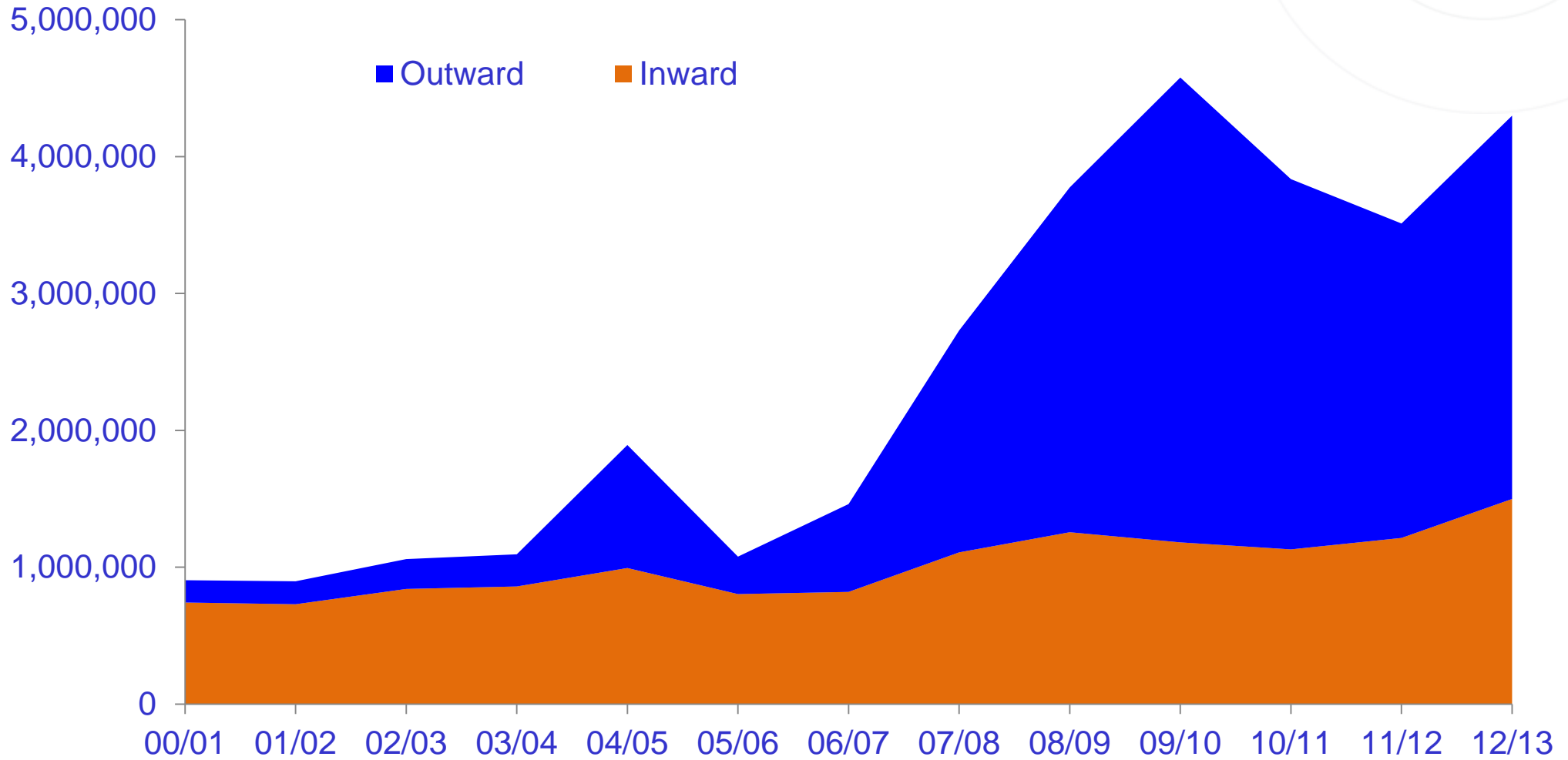


# East Arm Logistics





# Growth Long Term V Short Term







DARWIN PORT CORPORATION

# Optimising For All



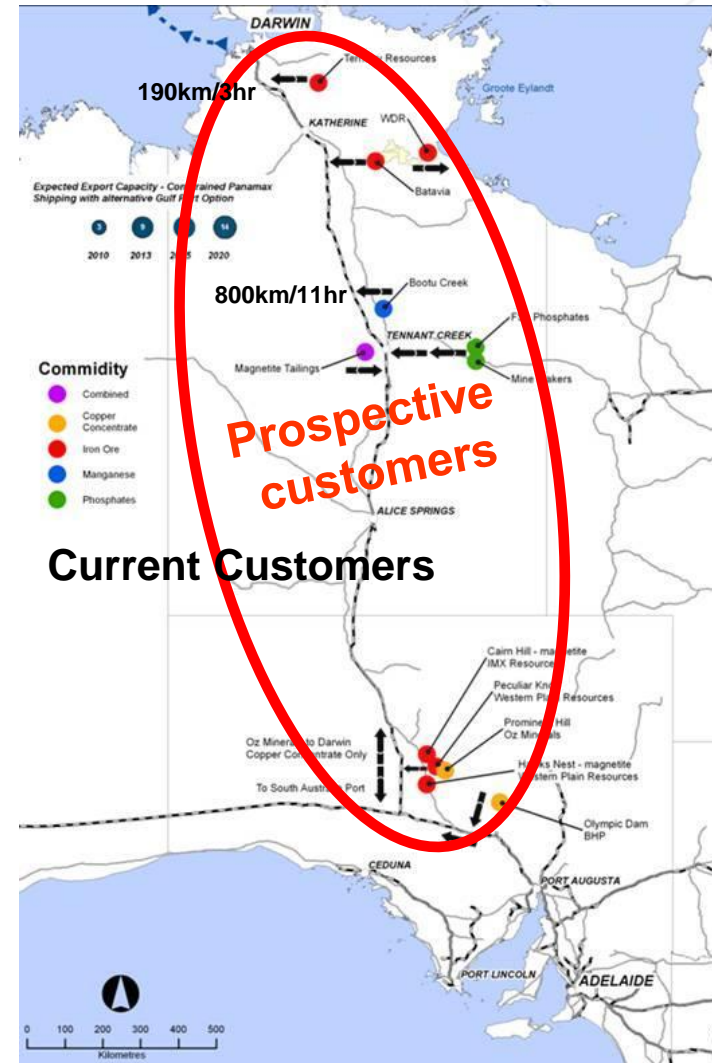


# Potential Trade Expansion

- Iron Ore - 5 to 15 Mtpa
- Manganese Ore - 1 Mtpa
- Phosphates - 3 to 7 Mtpa
- Copper Concentrates - 2 Mtpa

Could include:

- Minemakers
- Central Australian Phosphate
- TNG Limited
- Tellus Holdings
- Noble expansion
- Plus numerous junior miners

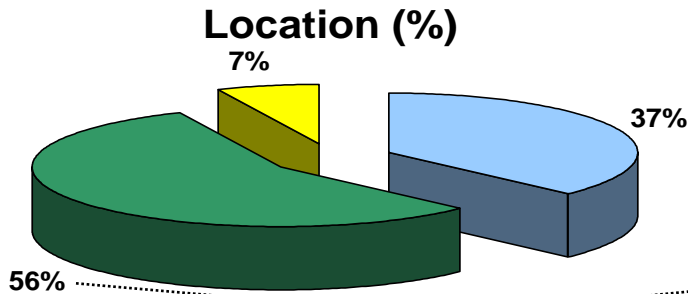


Alignment with Genesee & Wyoming



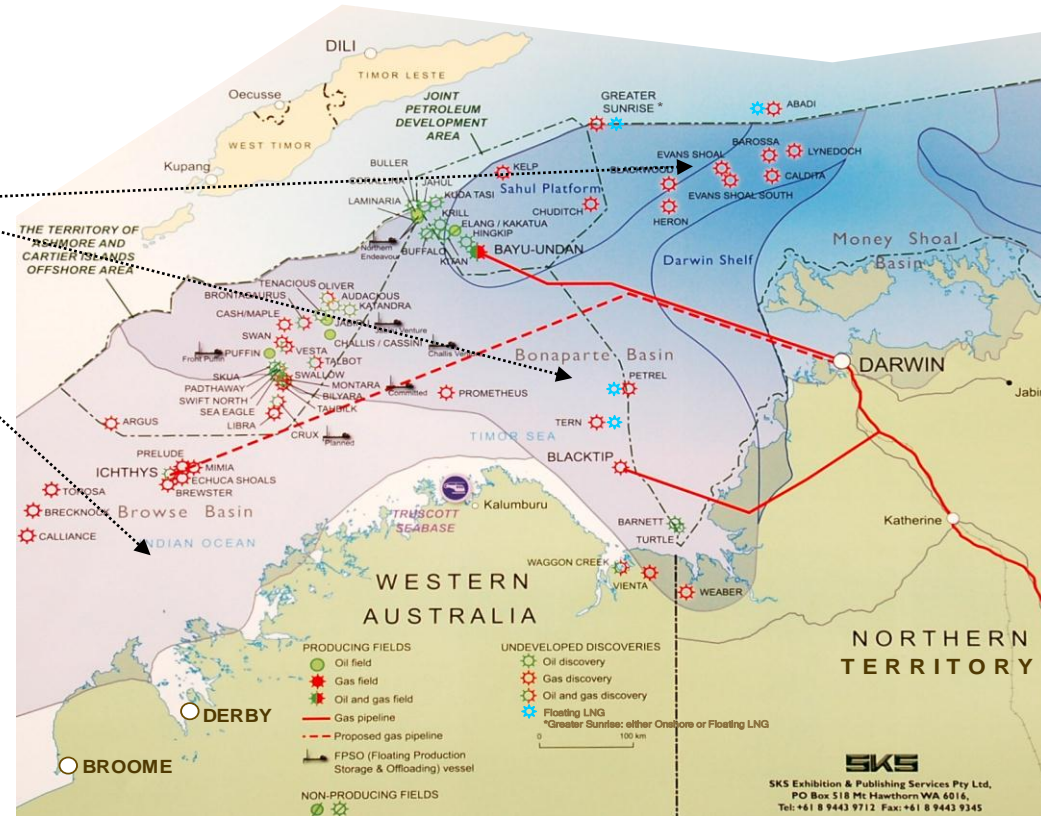
# Darwin's Marine Supply Base potential business

## Offshore Industry Production Volumes by Location (%)



**Total = 18,441 millions of barrels of oil equivalent**

- Bonaparte, Timor Sea and JPDA
- Browse Basin
- Currently Producing



# MSB



- 286m Wharf
- 6 Hectares on Site
- Cost \$115m
- Delivery Time:  
Operational  
2 Years  
Final work  
3 years



# Bladin Point Inpex Development





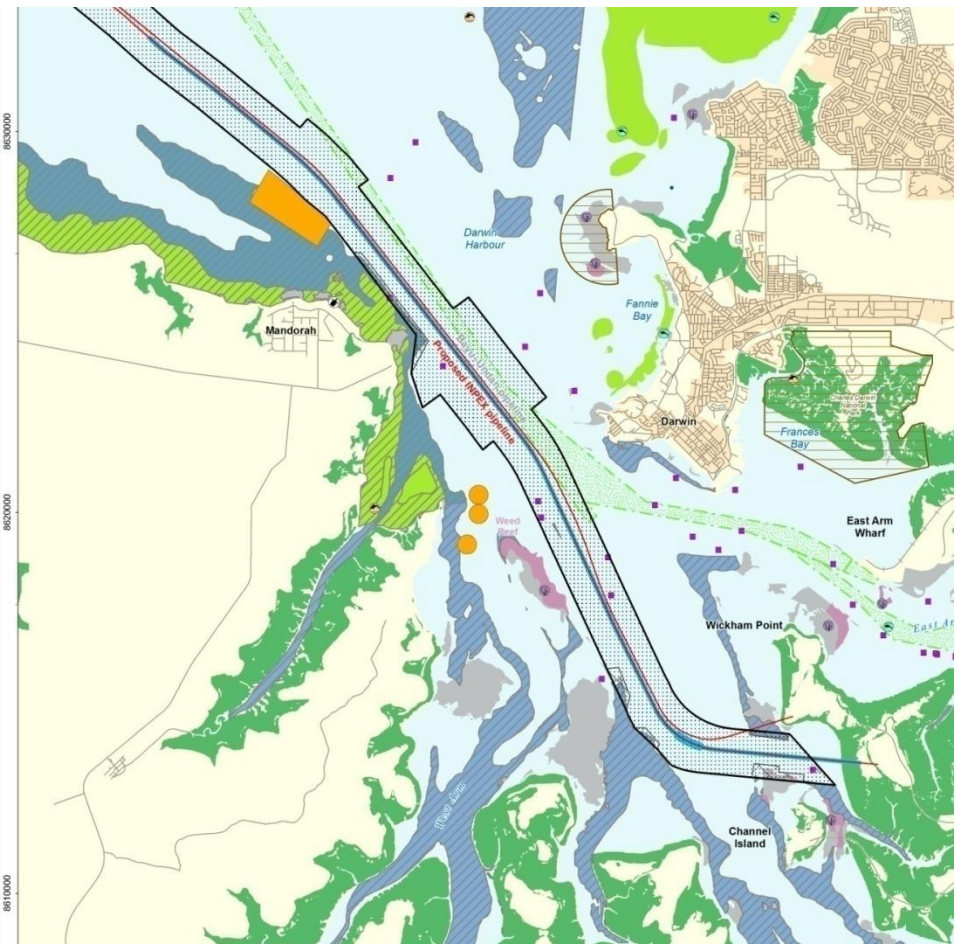
DARWIN PORT CORPORATION

# Current Works





# Dredging



# Not All About Infrastructure





**PORT of DARWIN - Australia's northern gateway of choice**

**Thank you**

