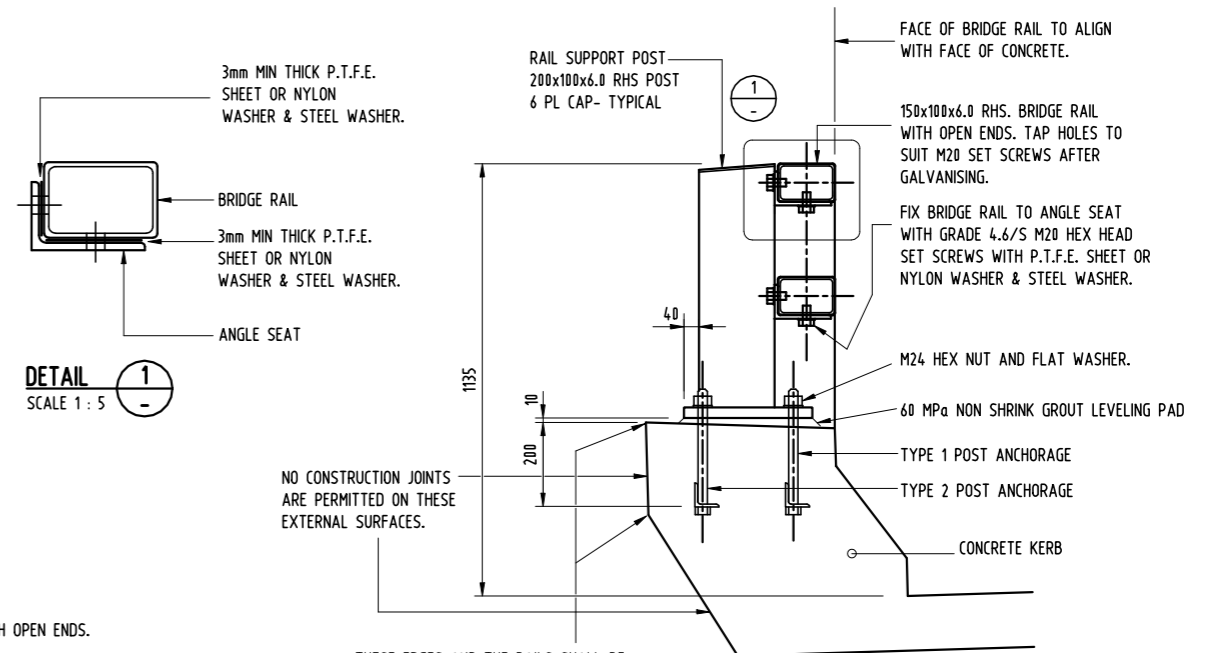


ELEVATION
SCALE 1:100

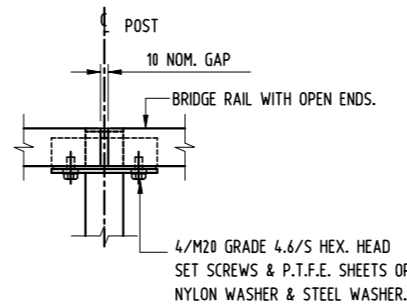
- * - DENOTES LOCATION OF 10mm NOMINAL GAP IN BRIDGE RAIL. REFER DETAIL.
- ** - DENOTES LOCATION OF EXPANSION JOINT IN BRIDGE RAIL. REFER DETAIL.
- EJ - EXPANSION JOINT IN BRIDGE DECK.



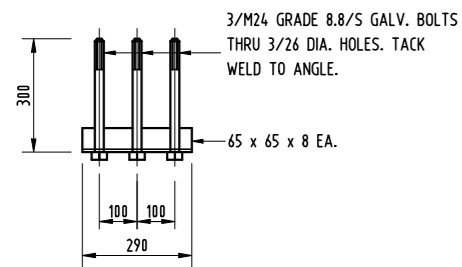
TYPICAL SECTION
SCALE 1:10

THESE EDGES AND THE RAILS SHALL BE CONSTRUCTED TO GOOD LINE AND LEVEL TO PROVIDE ATTRACTIVE APPEARANCE. FORMWORK SHOULD BE ADJUSTED TO ALLOW FOR DEFLECTIONS DUE TO DEAD LOADS AFTER OR AS A RESULT OF CASTING.

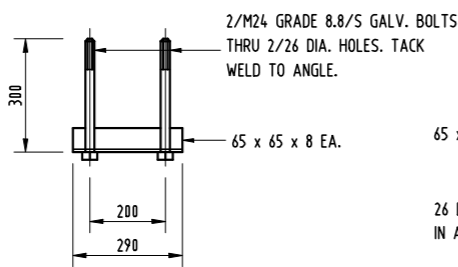
DETAIL 1
SCALE 1:5



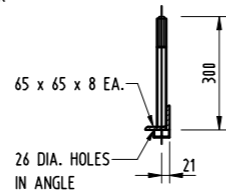
TYPICAL DETAIL - 10mm GAP
SCALE 1:10



ANCHOR TYPE 1

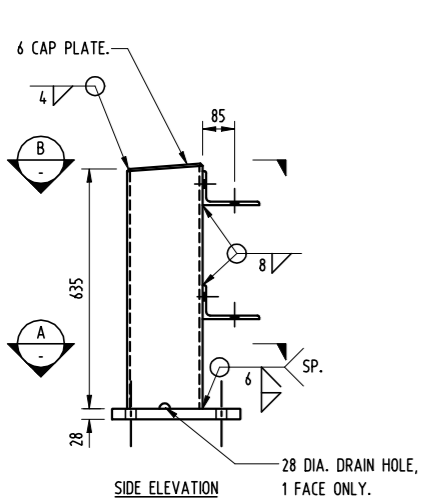


ANCHOR TYPE 2

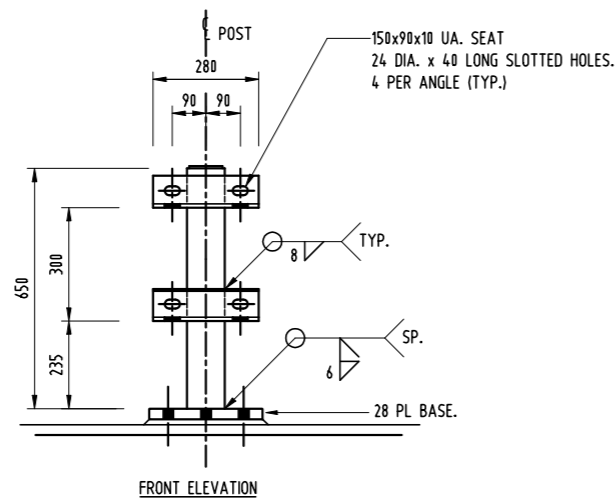


TYPICAL SIDE ELEVATION

POST ANCHORAGE
SCALE 1:10

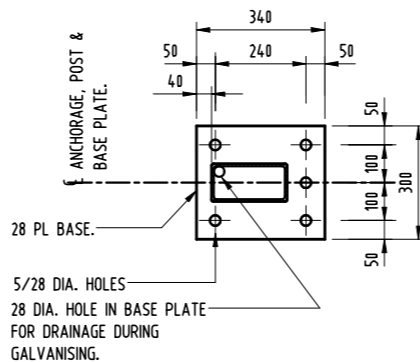


TYPICAL RAIL POST DETAIL
SCALE 1:10

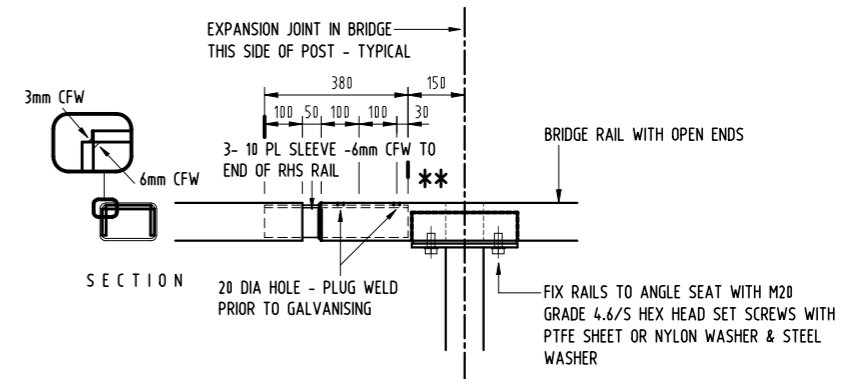


ANGLES NOT SHOWN FOR CLARITY

SECTION B
SCALE 1:10



SECTION A TYPICAL POST BASE PLATE DETAIL
SCALE 1:10



TYPICAL DETAIL - RAIL EXPANSION JOINT
SCALE 1:10

NOTE: SLEEVE TO BE A NEAT, TIGHT FIT TO MATING RHS RAIL

NOTES:

1. USE GRADE C350 R.H.S. TO A.S.1163.
2. USE GRADE 250 STEEL TO A.S.3678 & A.S.3679 FOR OTHER STEELWORK.
3. USE GRADE 8.8 HEX. HEAD BOLTS TO A.S.1252 AND GRADE 4.6/S SET SCREWS.
4. WELDING SYMBOLS CONFORM TO A.S.1101.3
5. ALL WELDS TO BE GP CATEGORY U.N.O.
6. HOT DIP GALVANISE BOLTS, SET SCREWS AND NUTS TO A.S.1214; WASHERS TO A.S.1650.
7. ERECT POSTS VERTICALLY AND POSITION TO GIVE SMOOTH LINE OF RAILING.
8. DIMENSIONS FOR RAIL LENGTHS GIVEN ON ELEVATION ARE BASED ON CENTRELINE OF RAIL. ALL LENGTHS OF RAIL ARE TO BE CONFIRMED ON SITE BASED ON ACTUAL POST LOCATIONS.
9. ALL POSTS AND RAILING TO BE HOT DIP GALVANISED AFTER FABRICATION.
10. ELECTRODES FOR WELDING BASE PLATE TO BE E48XX. ELECTRODES FOR OTHER WELDING TO BE E41XX.
11. BRIDGE RAILS MAY BE DRILLED AND TAPPED AFTER GALVANISING. ALL OTHER STEELWORK GALVANISED AFTER FABRICATION.
12. DECK CANTILEVER AND CONNECTION OF KERB TO IT SHALL BE AT LEAST 15% STRONGER THAN THE STRENGTH REQUIRED TO DEVELOP THE DESIGN UPPER-BOUND FULL TENSILE STRENGTH CAPACITY OF THE GUARDRAIL HOLD-DOWN BOLTS.

1	GOVERNMENT DEPARTMENT LOGO CHANGED	03/2010	W.L.
No.	DESCRIPTION	DATE	INIT.
AMENDMENTS			

DRAWN	S.H.W.	CHECKED	
DATE	November 2004	DATE	
DESIGNED	G.C.	CHECKED	
DATE	November 2004	DATE	
DESIGN PROJECT LEADER	<i>G.A. Curran</i>	PROJECT OFFICER	
DATE	18 November 2004	DATE	

Northern Territory Government
Department of Construction and Infrastructure

STANDARD DRAWING		TYPICAL BRIDGE RAIL DETAILS	
FILE No.	ASSET No.	SHEET No.	DRAWING No.
		OF	CS1312 - 1
			AMEND. A3