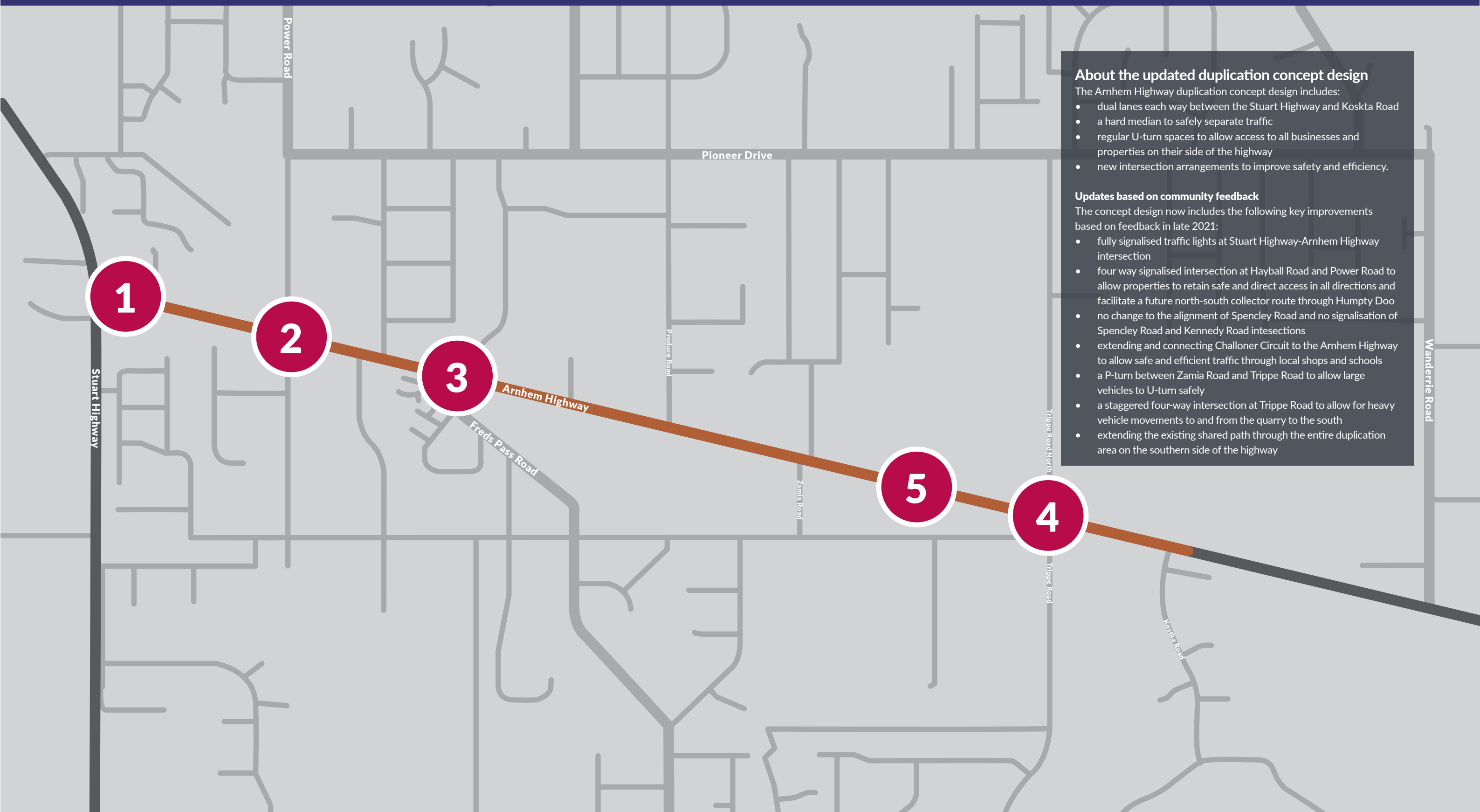


Arnhem Highway Duplication from Stuart Highway to Kostka Road



About the updated duplication concept design

The Arnhem Highway duplication concept design includes:

- dual lanes each way between the Stuart Highway and Koskta Road
- a hard median to safely separate traffic
- regular U-turn spaces to allow access to all businesses and properties on their side of the highway
- new intersection arrangements to improve safety and efficiency.

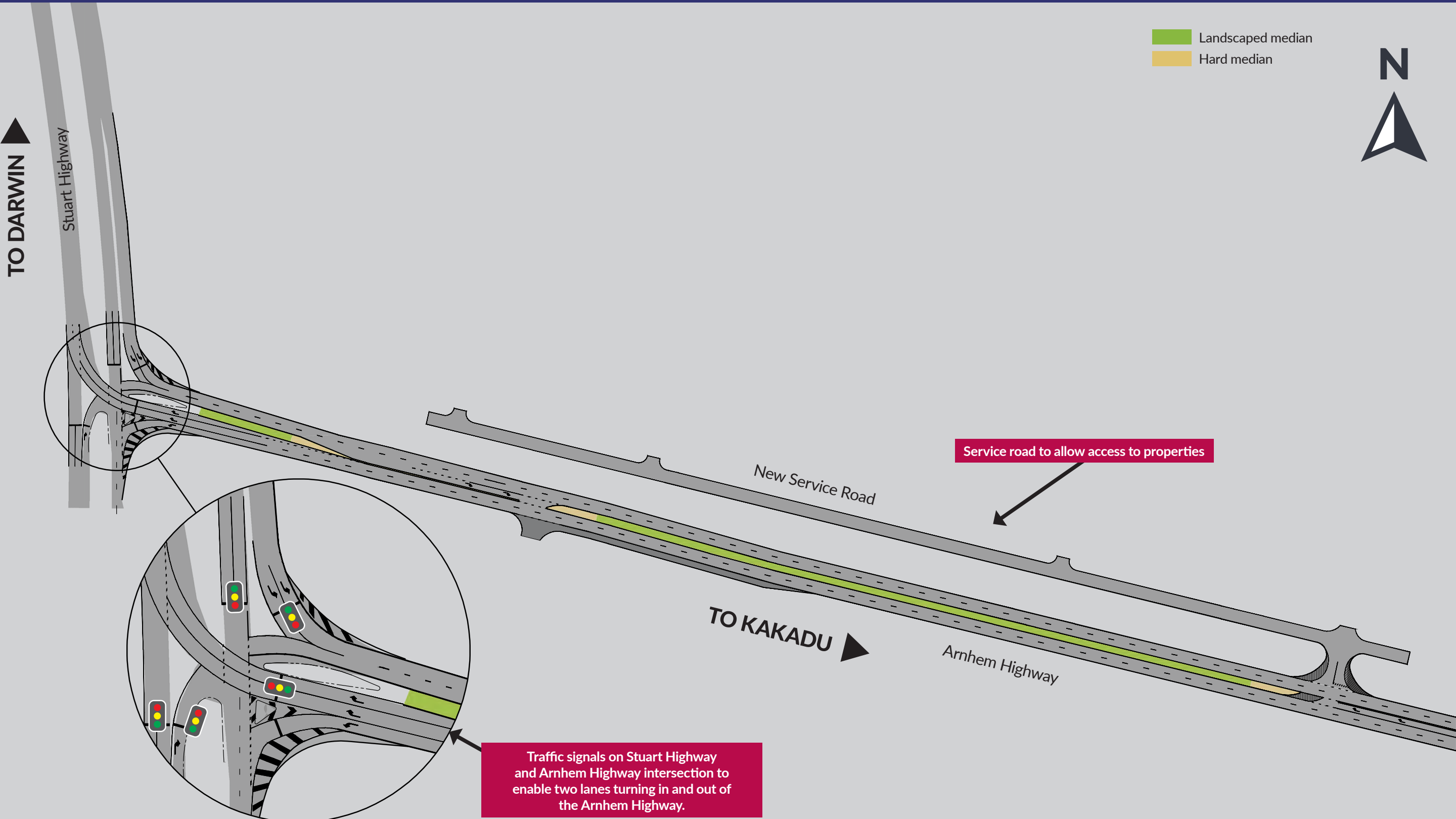
Updates based on community feedback

The concept design now includes the following key improvements based on feedback in late 2021:

- fully signalised traffic lights at Stuart Highway-Arnhem Highway intersection
- four way signalised intersection at Hayball Road and Power Road to allow properties to retain safe and direct access in all directions and facilitate a future north-south collector route through Humpty Doo
- no change to the alignment of Spencley Road and no signalisation of Spencley Road and Kennedy Road intesections
- extending and connecting Challoner Circuit to the Arnhem Highway to allow safe and efficient traffic through local shops and schools
- a P-turn between Zamia Road and Trippe Road to allow large vehicles to U-turn safely
- a staggered four-way intersection at Trippe Road to allow for heavy vehicle movements to and from the quarry to the south
- extending the existing shared path through the entire duplication area on the southern side of the highway

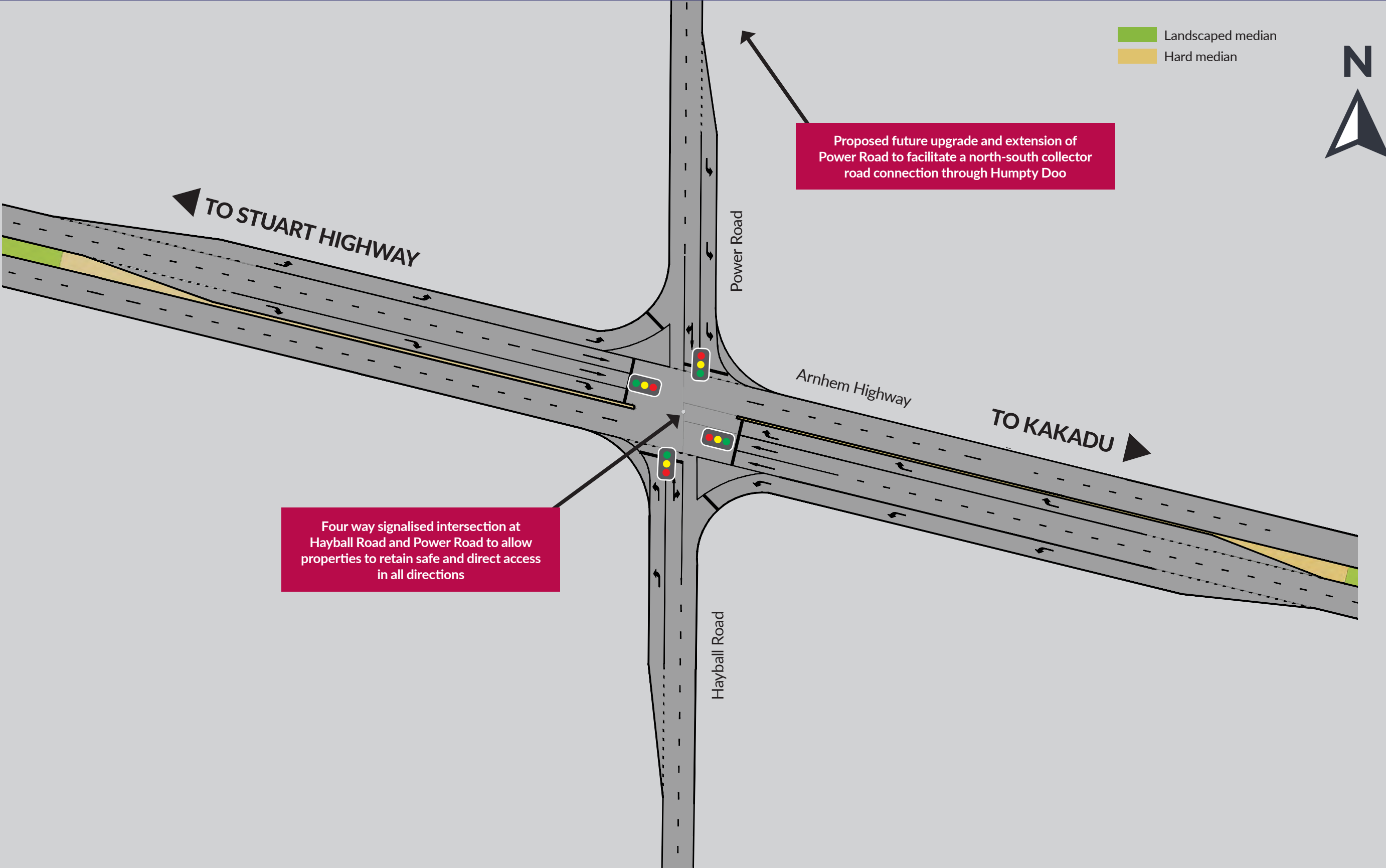
Arnhem Highway Duplication

Arnhem Highway/Stuart Highway Intersection



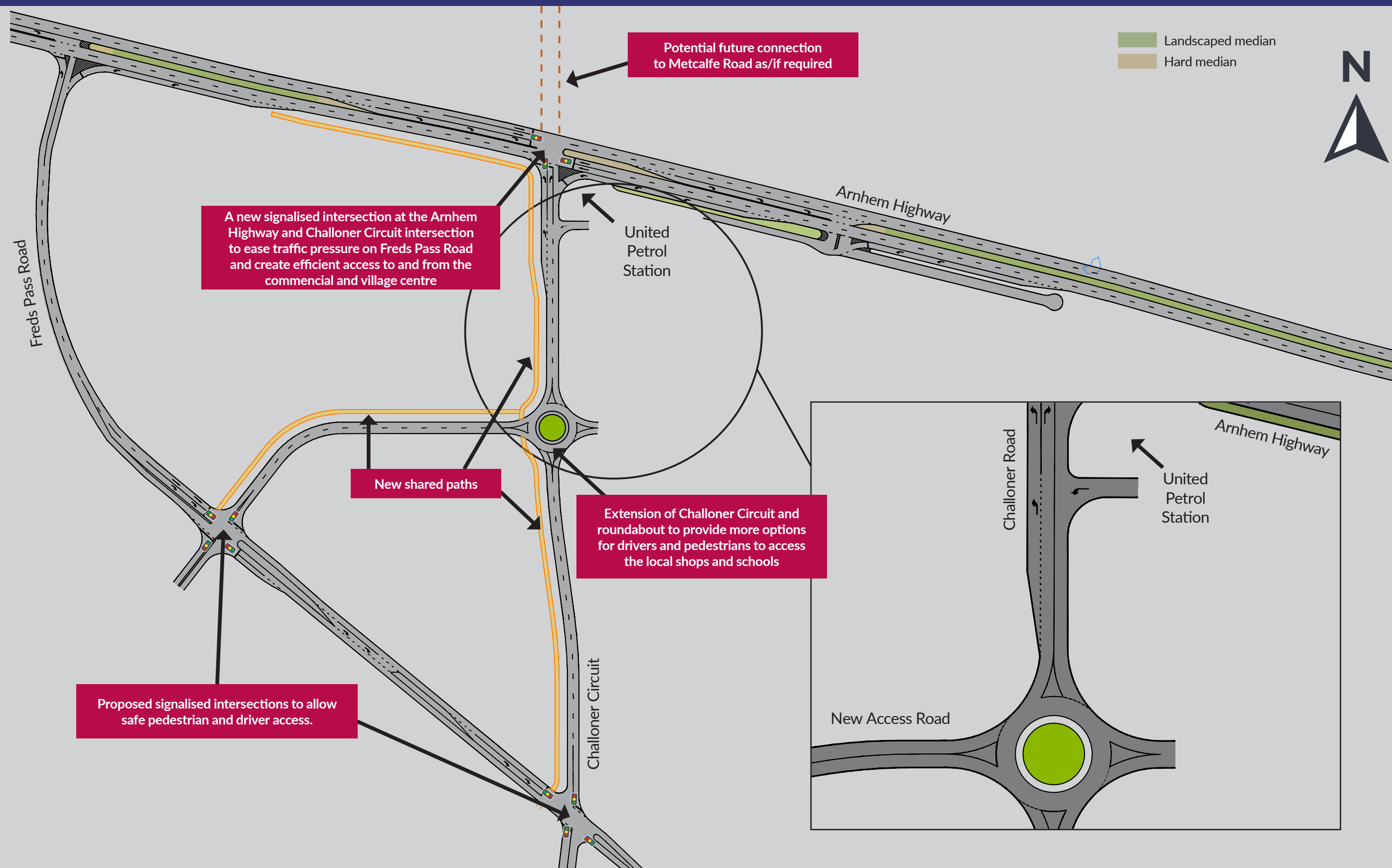
Arnhem Highway Duplication

Signalised Intersection Arnhem Highway/Power Road/Hayball Road



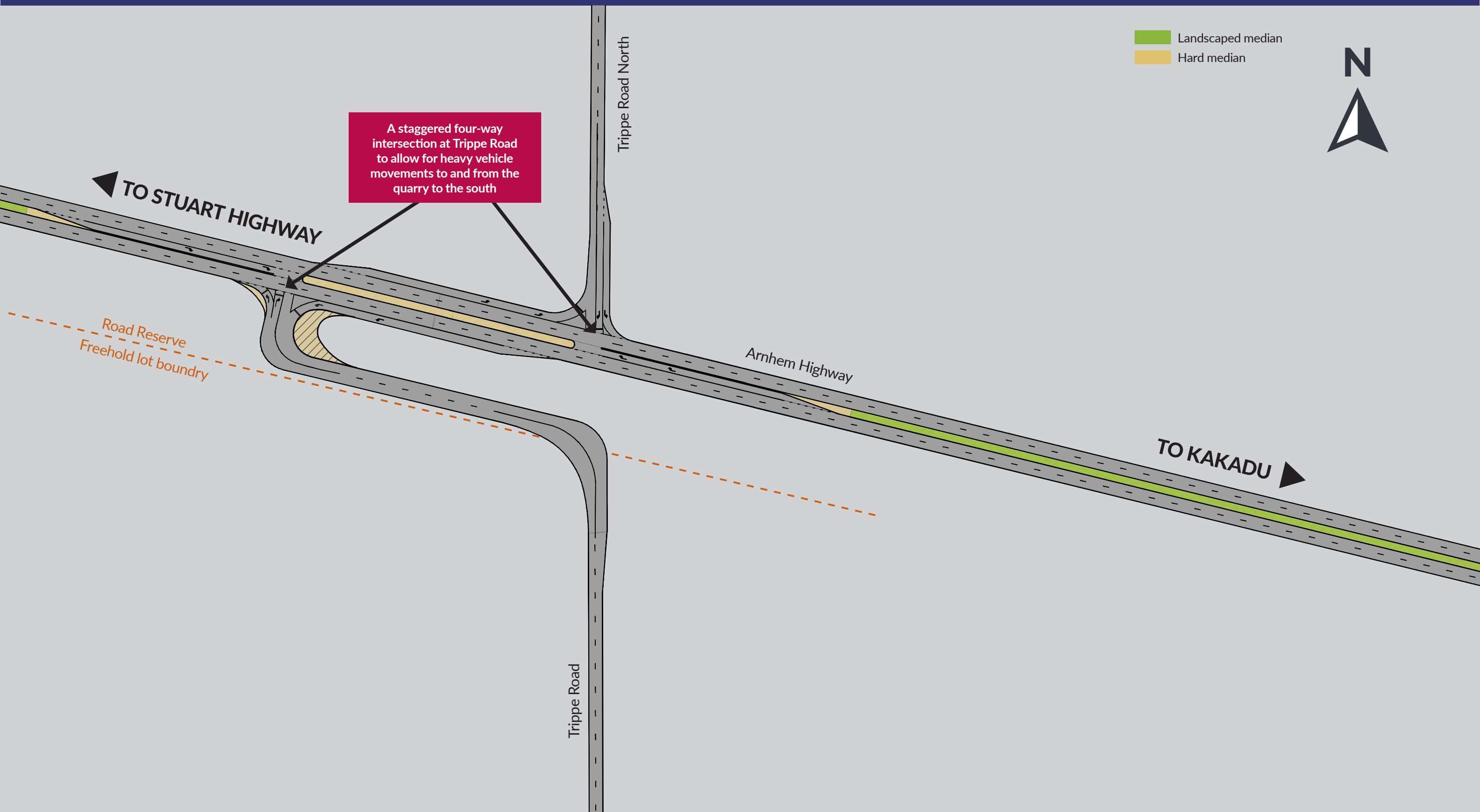
Arnhem Highway Duplication

Freds Pass Road and Challoner Circuit



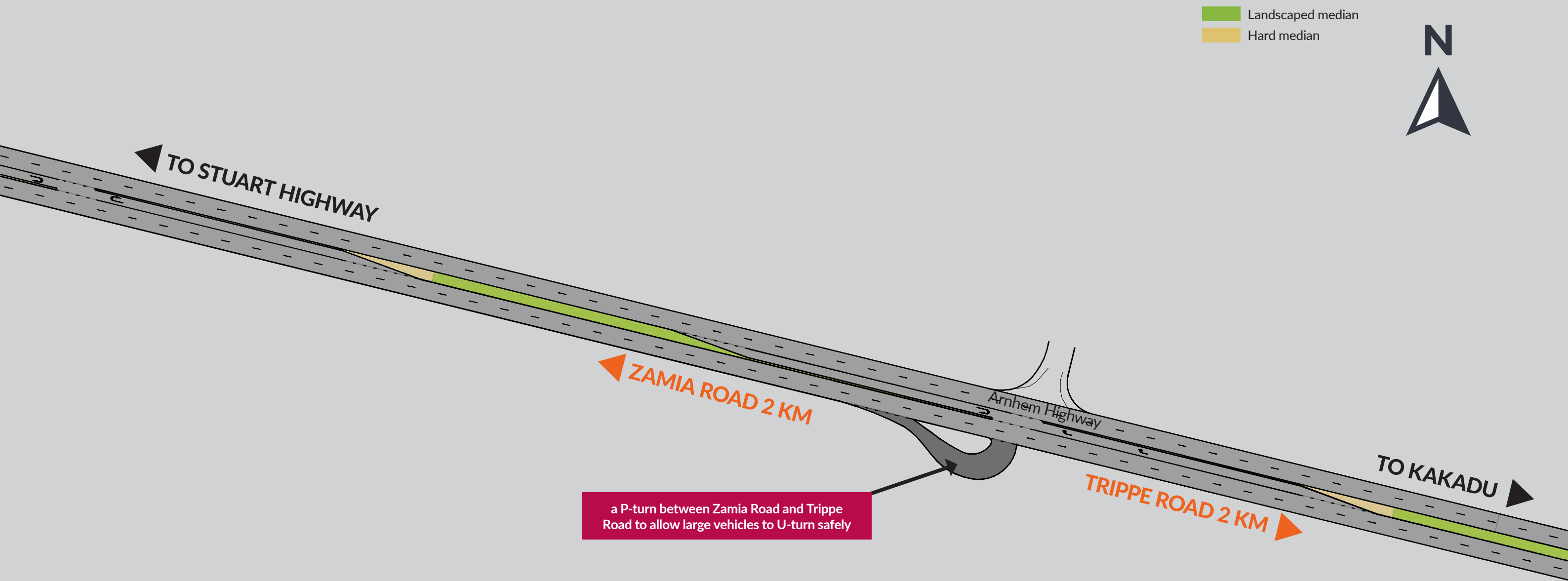
Arnhem Highway Duplication

Trippe Road realignment



Arnhem Highway Duplication

P-turn



Arnhem Highway Duplication

U-turn and P-turn locations along Arnhem Highway

