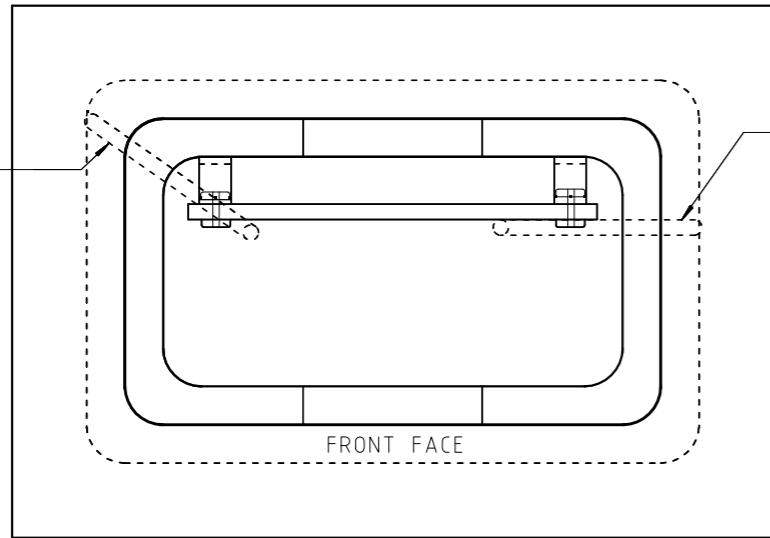
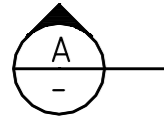


NOTE: PLAN VIEW - SHOWING VARYING DIRECTION OF COMMUNICATION DUCTS ONLY

REFER NOTE 1



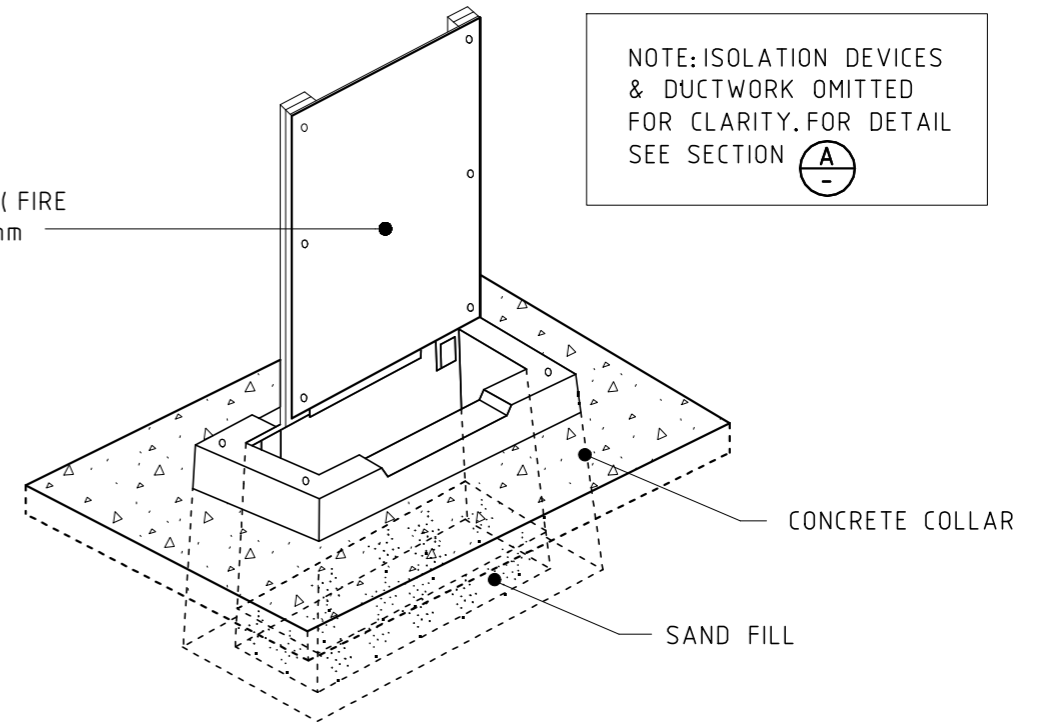
PLAN VIEW

REFER NOTE 1

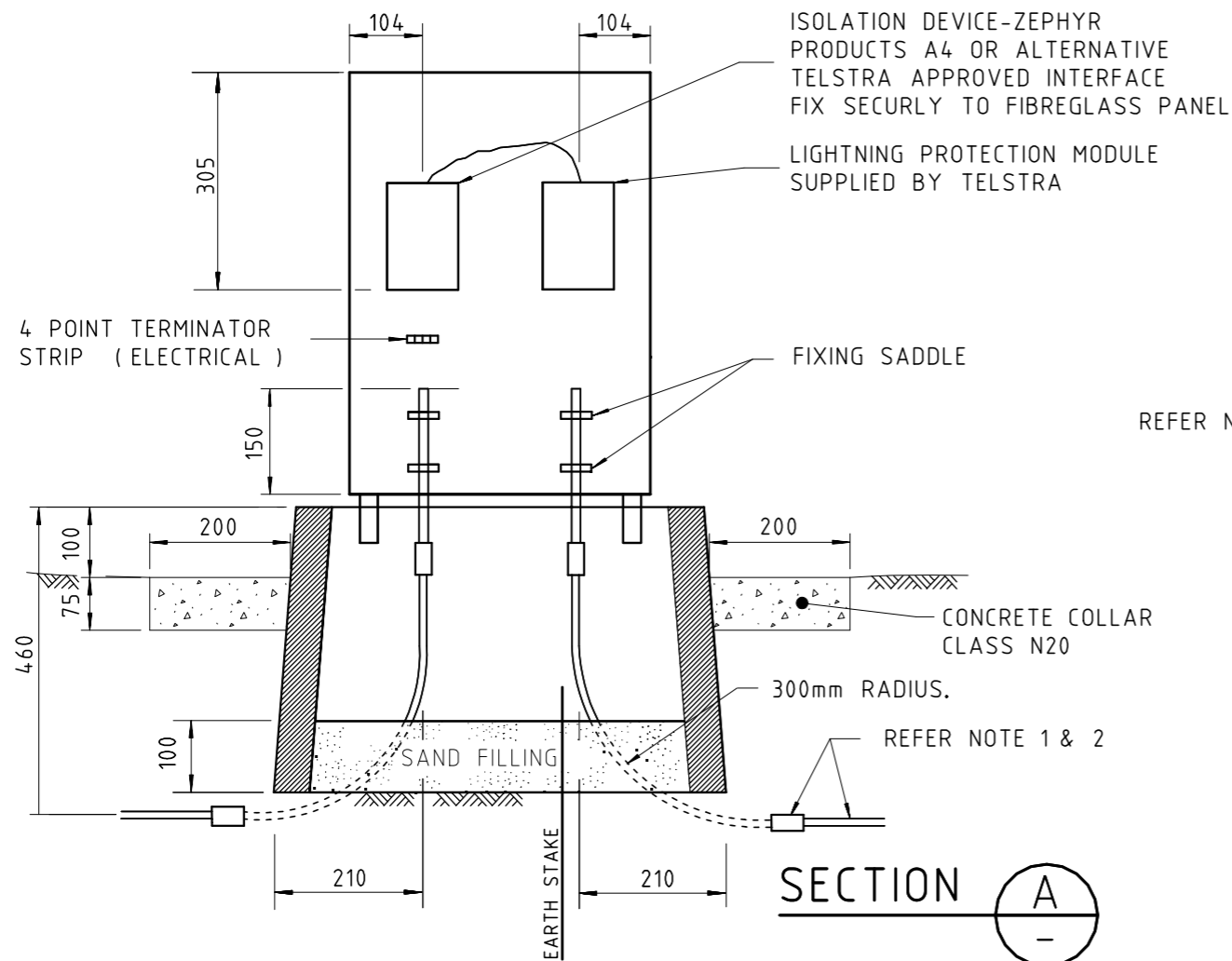


FIBRE-GLASS PANEL ( FIRE RETARDANT RESIN 5mm THICKNESS )

NOTE: ISOLATION DEVICES & DUCTWORK OMITTED FOR CLARITY. FOR DETAIL SEE SECTION

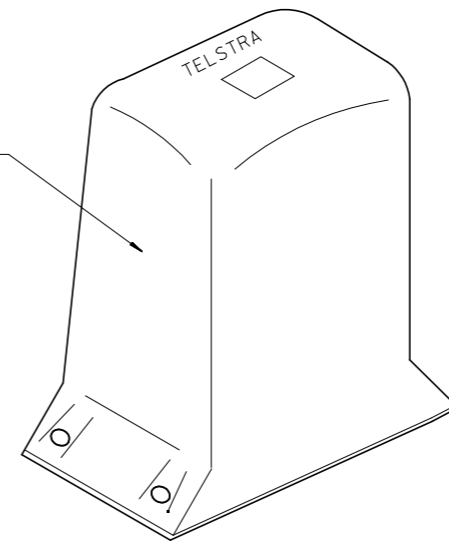


ISOMETRIC VIEW



SECTION

REFER NOTE 4



PREFABRICATED PILLAR

NOTES:

1. REFER TO INTERSECTION AND DUCT LAYOUT FOR DIRECTION AND LENGTH OF TELSTRA AND DEPT. OF TRANSPORT AND WORKS COMMUNICATION DUCTS.
2. 20mm ID AS1477 CLASS 12 WHITE PVC CONDUIT WITH 300mm RADIUS BEND WITH DRAW WIRE.
3. 3.15mm GALVANISED DRAW WIRE SHALL BE INSTALLED IN CONDUITS
4. SUITABLE PILLAR TYPE AUSTRALIAN LINE MATERIALS CAT No. UET-SLI/T.
5. EITHER DUCT MAY CARRY TELSTRA PAIR ACCORDING TO SITE REQUIREMENTS.
6. DETAIL OF REVERSE FACE MAY APPLY.
7. THE CABLE FROM THE ISOLATION DEVICE IS TO BE CONNECTED DIRECTLY TO THE LIGHTNING PROTECTION.
8. EARTH STAKE TO BE INSTALLED AS PER AS3000 AND TO MEET TELSTRA AUSTRALIA REQUIREMENTS.

15/03/2010 4:04:52 PM X:\CIVIL STANDARD DRAWINGS\TRAFFIC 6 - CS1500 SERIES STANDARDS\CS1504-3.dgn

No.	DESCRIPTION	DATE	INIT.
3.	GOVERNMENT DEPARTMENT LOGO CHANGED.	3/10	W.L.
2.	GOVERNMENT DEPARTMENT LOGO CHANGED.	5/02	K.S.
1.	CONCRETE COLLAR AND 4 POINT TERMINATION STRIP ADDED	3/98	A.D.

**WARNING**  
**BEWARE OF UNDERGROUND SERVICES**  
 The locations of underground services are approximate only and their exact position should be proven on site. No guarantee is given that all existing services are shown.

DRAWN	CHECKED
DATE	DATE
DESIGNED	CHECKED
DATE	DATE
DESIGN PROJECT LEADER	PROJECT OFFICER
<i>William Morda</i>	
DATE 20 MAY 2002	DATE



Department of Construction and Infrastructure

STANDARD DRAWING  
 SIGNAL DETAILS  
 COMMUNICATION ISOLATION PILLAR

FILE No.	ASSET No.	SHEET No.	DRAWING No.	AMEND.	SHEET SIZE
		1 OF 1	CS1504-3		A3